

# Burnaby Village Museum

2019 Annual Report





# Acknowledgement

Burnaby is located on the ancestral and unceded homelands of the hən̓q̓əmi̓ñəm and Skwxwú7mesh speaking peoples. We are grateful for the opportunity to be on this shared territory.



## 2019 Highlights

- 252 Volunteers Contributing: 10,540 hours
- School Program Attendance: 11,887
- Public Program Attendance: 9,813
- On-site Attendance: 291,267
- Grants & Donations: \$13,247
- Sponsorships: \$35,000
- In-kind Donations: \$9,680

## 2019 Openings

- Spring Break: March 18-29
- Summer Season: May 4-September 2
- Haunted Village: October 25-28
- Heritage Christmas: November 23, 2019-January 3, 2020

Burnaby Village Museum School Program  
Cover: Sam Seward, Indigenous Learning Week

# 2019 Year in Review

## Where History Comes to Life

2019 saw the Burnaby Village Museum excel in many of the goals outlined in the City's Corporate Strategic Plan.

### An Inclusive Community:

- Celebrate Diversity:** Create more opportunities for the community to celebrate diversity
- Serve a Diverse Community:** Ensure City services fully meet the needs of our dynamic community
- Create a Sense of Community:** Provide opportunities that encourage and welcome all community members and create a sense of belonging

### A Healthy Community

- Healthy Life:** Encourage opportunities for healthy living and well-being
- Lifelong Learning:** Improve upon and develop programs and services that enable ongoing learning
- Community Involvement:** Encourage residents and businesses to give back to and invest in the community

### A Connected Community

- Social Connection:** Enhance social connections throughout Burnaby
- Partnership:** Work collaboratively with businesses, educational institutions, associations, other communities and governments

It was a ground-breaking year for Burnaby Village Museum, in both the literal and figurative sense.

In 2019, we opened the Indigenous Learning House, a place where visitors can learn about hən̓q̓əmi̓ñəm and Skwxwú7mesh history and culture in Burnaby. Staffed by the museum's Indigenous education team, the creation of the Indigenous Learning House represents a watershed moment in history for Burnaby Village Museum and our commitment to the process of reconciliation.

Burnaby Village Museum continues to be a popular choice for families during spring break and over the holidays. A record number of visitors attended this year's Heritage Christmas event as we expanded the number of lights on display around the village.

Accessibility and inclusivity was a prevalent theme at Burnaby Village Museum this year. Seaforth School was retrofitted with a wheelchair-accessible entry, and we launched a number of programs catered towards French language learners and English as a Second Language (ESL) audiences.

As Burnaby Village Museum continues to grow and evolve, we are lucky to have a dedicated volunteer base whose passion for culture and history fuels the success of our programs. We look forward to working with our volunteers for years to come.

Deborah Tuyttens  
Cultural Heritage Manager



# Curatorial

2019 provided opportunities to collaborate with community partners and volunteers to learn more about the museum's collections and Burnaby's history. This work addressed several components of the City's Corporate Strategic Plan including celebrating diversity, creating an inclusive community and providing a connected community.

## Researching Burnaby's Diverse History

Researching and sharing stories that represent Burnaby's diverse history is a priority for the museum, and addresses the City's goal to be an inclusive community.

For the second year in a row, a partnership with the University of British Columbia offered an opportunity to build on research into Burnaby's Chinese Canadian history, and develop interpretive strategies to share the research with museum visitors. Four students participated in an Asian Canadian & Asian Migration Studies (ACAM) course on the history of Chinese migration, travelled to Asia, and then completed a placement at the museum. They researched and developed interpretive experiences to share the history of Chinese migration with museum visitors.

Research into Burnaby's Chinese Canadian communities, Indigenous peoples and the lives of women and working peoples culminated with the publication of the History of Burnaby Resource Guide. The guide acts as a foundational document for staff and the public to learn the history of Burnaby. As staff continue to conduct research into less-represented communities, this guide provides room for the diverse lives that shaped (and continue to shape) life in Burnaby.

## Contributing to an Inclusive Community

Sharing research in the community helped promote the City's strategic goal to create an inclusive community by welcoming all community members and creating a sense of belonging.

The museum again co-hosted the Neighbourhood History Series with the Burnaby Public Library, featuring three walking tours and four lectures exploring the diverse history of Burnaby. This year's program included:

- » Ceperley Estate Walking Tour, September 21
- » History of the Heights: McGill Library, September 25
- » Heritage Bus Tour to the Transit Museum of B.C., September 28
- » Chinese Canadian Stories: Tommy Douglas Library, October 2
- » Al Salaam Mosque & Islamic Education Centre Tour, October 5
- » Songs of Resistance with the Solidarity Choir, Burnaby Village Museum, October 16
- » Unfounded: Discussions in Decolonizing Heritage, Bob Prittie Metrotown Library, October 23

Work concluded on a multi-year research project to develop an Indigenous History in Burnaby Resource Guide in consultation with Kwantlen, xʷməθkʷəy̓əm, Skwxwú7mesh, and Tsleil-Waututh First Nations. The 27-page illustrated educational guide provides an overview of hə́ŋqəmihə́m and Skwxwú7mesh history in Burnaby from the time of the ancestors to the present day. The guide should be considered a living document that will be updated as we continue ongoing conversations with all First Nations who share territory in Burnaby.

## A Connected Community



Protecting the City's assets, information and services helps the City meet its goal to be a connected community through digital connections. The museum provides access to its large collection of historical assets on HeritageBurnaby.ca that provide a record of the history of Burnaby.

The Burnaby Village Museum collection consists of 55,000 artifacts, 5,800 photographs, over 1,000 maps, more than 4,500 books and 1,200 archival records. More than 40 per cent of the collection is on exhibit at the museum.

Staff launched a project to create a system of tiers for the collection to document those assets with enduring historical value to Burnaby. Thorough research and documentation unveiled many treasures already within our holdings.

Staff research unveiled a raincoat in the collection with a powerful Burnaby story. During the Depression, many Burnaby workers lost their jobs and were unable to pay taxes on their homes. Burnaby Council made arrangements for the male property owners to work off their taxes. Some worked by cutting down the huge stumps left after logging. Burnaby Council provided raincoats to all workers to help support their new, physical work.

Volunteers and staff worked together to research and document new donations, as well as artifacts that have been in the collection for many years. Over 300 hours of volunteer time was contributed to the work of the curatorial department in 2019.



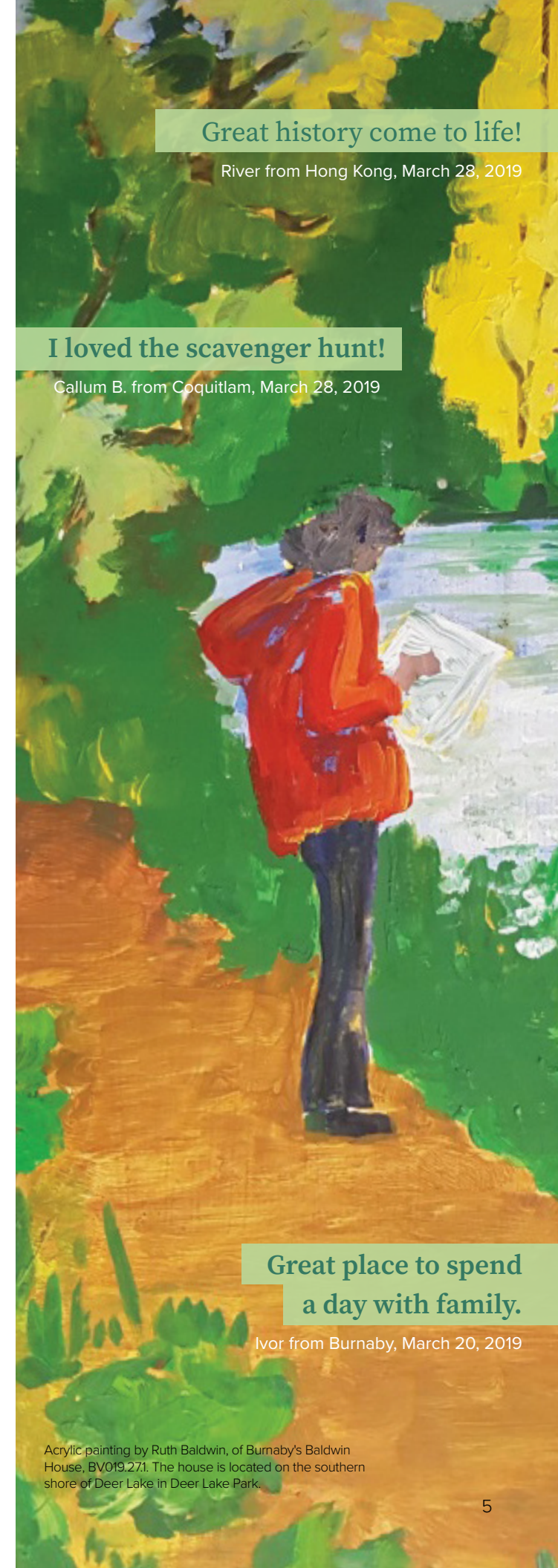
Rubberized raincoat which belonged to Frank Eshelby of North Fell Avenue, Burnaby, circa 1920s. BV998.571

Great history come to life!

River from Hong Kong, March 28, 2019

I loved the scavenger hunt!

Callum B. from Coquitlam, March 28, 2019



Great place to spend a day with family.

Ivor from Burnaby, March 20, 2019

Acrylic painting by Ruth Baldwin, of Burnaby's Baldwin House, BV019.271. The house is located on the southern shore of Deer Lake in Deer Lake Park.



(left) UBC student Debbie Liang's interactive exhibit panel.



# Conservation

The museum's collection includes thousands of artifacts and several original Burnaby heritage buildings. Conservation staff balance long-term preservation goals with public use, protecting and providing access to the unique City assets in the museum's care.

## Community Amenity Safety

One of the most appreciated artifacts in the museum's collection, the 1912 C.W. Parker Carousel also operates to maximum capacity as a public ride. Keeping riders safe is the top priority in carousel operation. In 2019 we commissioned the fabrication of high quality, high strength replacement gears and bearings for the carousel drive train. These components take the power of the main gear on the center pole, across the upper beams to move the horses up and down. The new parts look and work the same but without the loose tolerances of the worn original parts. Riders may notice their favourite horse now gives a better ride.



(left) New carousel bearings, castings, and forms.  
(right) Original carousel eccentric rod bearing, in situ.



Students in front of Seaforth School at its original location on Government Road, c. 1925. This school is now on site at Burnaby Village Museum. BV985.6022.1

## Creating a Sense of Community

Built in 1922, Seaforth School has long been a centre of the community. By installing an automatic door opener and a widened landing at the back door of the school, we've made it easier to access for people with mobility issues. These changes improve accessibility while preserving the character defining qualities of this designated heritage building.

## Maintaining City Facilities

Visitors love our beautiful heritage buildings – inside and out! In 2019 we renewed the custom wallpapers in two public spaces: the Elworth house and Love Farmhouse hallways. Both spaces were built to accommodate families, but in a museum setting, they can shelter school groups and crowds during high volume events. The previous wallpaper was carefully wetted and removed by experienced staff. The new sheets were cut to length and adhered with rice starch paste made from scratch.

Seaforth School benefitted from our annual village painting upgrades. Since re-shingling in the 1980's, the building had remained mostly unpainted. By looking at the layers of paint on window frames, door frames and a few preserved original shingles, we were able to identify the historic colours and create a paint history document with colour choices for our painting contractor.



(top) Elworth wallpaper team  
(bottom) Love Farmhouse with new hallway wallpaper.





(top) Seaforth School before repainting.  
 (bottom) Seaforth School after repainting.

## Serving an Inclusive Community

The conservation team have been making our collections more accessible to the community. By using the special photography setup in the conservation lab, the hard-to see details of fragile artifacts can be documented. The images are then added to the Heritage Burnaby website and artifact database. It can be complicated to get close up shots, such as this owner label inside a rubber raincoat which has become completely inflexible.

When objects are especially fragile and unique, museum staff make customized acid-free service supports for viewing, transporting and display.

It is now much easier for staff to set up a viewing and research area for First Nations communities to spend time with their ancestral belongings.

A highlight of the *Across the Pacific* exhibit is an unusual device used to irrigate fields by moving water uphill. Conversations with the owner identified how the device worked but a few lost pieces made it difficult to see that functionality in the artifact itself. A plexiglass “board” and reversible ties were added so that visitors see how the device works and how human pedal power lifts water into parched fields.



(top left) Conservation detail photography of BV998.571.  
 (bottom left) First Nations belongings in new service supports.



(top right) Waterwheel 水車 水车 on loan from Elwin Xie for the *Across the Pacific* exhibition. This waterwheel travelled from Zhongshan to a farm on Vancouver’s southwest Marine Drive.  
 (bottom right) Waterwheel 水車 水车, interior detail.



# Exhibits

## New Exhibits

### Indigenous Learning House

The Indigenous Learning House is a place where visitors can learn about hə́n̓q̓əmiḥə́m̓ and Sk̓wxwú7mesh history and culture in Burnaby.

The exterior of the Learning House is adorned with a 'Welcome Figure' banner, an original digital rendering by Tsleil-Waututh artist Ocean Hyland commissioned especially for the space. Museum staff honoured Ocean in a small, intimate ceremony in which the artwork was unveiled. The Indigenous Learning House is a place where the museum's Indigenous education team, cultural presenters, and artists can share with visitors and schoolchildren.

### Matriarch's Garden

To accompany the Indigenous Learning House, a Matriarch's Garden was installed to provide a space for the museum's Indigenous Educators to share their knowledge about plants. The Matriarch's Garden is filled with plants local to Burnaby that have always been important to hə́n̓q̓əmiḥə́m̓ and Sk̓wxwú7mesh speaking people. The stones are shaped in the form of a Coast Salish eye and represent the grandfathers. All of the plants in the garden — the grandmothers — were selected to honour the matriarchs.

## Temporary Exhibits

Summer exhibits focused on patterns that were woven throughout the village. A feature exhibit in the Stride Studios temporary gallery looked at the history and legacy of Chinese-Canadians in Burnaby.

### Across the Pacific

May to September 2020, Stride Studios exhibition gallery

The gallery featured an exhibit on the long history of Chinese-Canadians in Burnaby. The tri-lingual exhibit was a collaboration with the descendants of some of Burnaby's Chinese farm families, including those who continue to farm in the city's Big Bend area.

### Chinese Canadian Market Gardens

May-September, Orchard

The long history of produce farms operated by Chinese-Canadian families in South Burnaby was explored through interpretive signage, interactive activities and a vegetable garden that replicated growing techniques used by market gardeners to maximize crop yield.

## Outreach Exhibits

### All that Glows

March-October, Shadbolt Centre for the Arts

The history of electricity in Burnaby.

### Made by Hand

November-December, Shadbolt Centre for the Arts

A selection of handmade Christmas gifts.

### Everyday Inventions

July & August, Burnaby Public Libraries

A selection of objects that compared historic inventions from 100 years ago to today using artifacts from BVM's collection. Participants in the Summer Reading Program were invited to match the object to the modern version of today. In partnership with the Burnaby Public Library.

- » McGill Library, July 4-21
- » Cameron Library, July 22-August 5
- » Tommy Douglas Library, August 6-August 18
- » Bob Prittie Metrotown Branch, August 19-September 8



(top) Artist, Ocean Hyland with Welcome Figure banner.  
(bottom) A visitor in the Across the Pacific exhibition.



## Heritage Christmas

Concord Pacific was the presenting sponsor for this year's Heritage Christmas season, which ran from November 23 to January 3 and attracted 72,839 visitors to the site.

The official launch of Heritage Christmas took place on November 30 with a special tree lighting ceremony led by Mayor Mike Hurley, as well as representatives from Concord Pacific and the Burnaby Christmas Bureau. The City of Burnaby donated the proceeds of all carousel tickets sales to the Burnaby Christmas Bureau that night, with Concord Pacific matching sales to double the donation total. For every picture taken at Heritage Christmas from December 13 to 23 and posted with the hashtag #ConcordSleigh on Instagram or Facebook, Concord Pacific donated \$5 to Burnaby Christmas Bureau.

Once again, installations of lights and lit decorations on trees and buildings were featured throughout the village, as well as vintage Christmas displays inside the exhibit buildings.

A popular new addition this year was the addition of lights on our bandstand. Several eco-sculpture displays were provided by Parks, Recreation and Cultural Services, including bears wearing festive sweaters, a group of frogs and dancing ladies at Elworth.

For the second year in a row, a family of lit Roosevelt elk sculptures was placed in the orchard to remind visitors that elk were once plentiful in this area.

Christmas entertainment included Father Christmas, carolers, street musicians and theatre performances. Home-made cookies were baked in the wood stove and shared with visitors each Sunday.

The 12 Days of Christmas scavenger hunt returned for another season. The hunt was refreshed with several clues from previous years replaced with new ones.

Vintage decorations in the village and traditional Christmas greens rounded out the decorations. Vintage radios were located in several of the heritage buildings, featuring Christmas music from the early 20th century.

Every year we make it part  
of our Xmas routine.

Schroeder family, Vancouver, December 3, 2019

Beautiful lights.  
Feels like going back in time.

Alex & Christine from Langley, December 19, 2019

Beautifully preserved.  
Awesome unexpected hidden treasure.

Mak, East Vancouver, December 26, 2019



# Programming & Education



In 2019, museum programming and education focused on lifelong learning, serving a diverse community and creating a sense of community. Staff developed opportunities for Indigenous learning on site, new school programs and large events to bring visitors together.

## Indigenous History and Lifelong Learning

Burnaby Village Museum worked with the City's Human Resources Department to host a series of learning sessions for the City's celebration of National Indigenous Peoples Month. Many City staff members from across departments participated in four workshops led by Indigenous Educators at the museum's new Indigenous Learning House.

All summer long the Learning House was home to the museum's annual Coast Salish Artist Series. Community members from the Skwxwú7mesh, Tsleil-Waututh, xʷməθkʷəy̓əm and Semiahmoo Nations shared their knowledge with the public.

The inaugural Burnaby Indigenous Learning Week was hosted by Burnaby Village Museum in partnership with the Burnaby School District and Vancity. Around 500 Burnaby students spent a day learning directly from Coast Salish knowledge keepers and educators about Indigenous history and culture.

## New School Programs Serve Diverse communities

- » Four brand new school programs were launched, which focus on inquiry learning, Indigenous history, French language learners and ESL audiences:
- » Navigating the Neighbourhood (K-2)
- » Indigenous Learning House (All Ages)
- » À l'école d'autrefois (Grades 1-3)
- » Let's Talk about the Past (Youth and Adult ESL)

## Large Events Create a Sense of Community

This past year, the museum saw record numbers of visitors for many of its popular openings, including Spring Break and Heritage Christmas. Some typically smaller events have now doubled their numbers in the last two years, such as Mother's Day, Father's Day and BC Day.

In 2019, the museum partnered with CUPE 23 to mark their 100th anniversary at the museum's annual Labour Day event. Special activities included a labour-themed scavenger hunt, folk music for the people, and of course free carousel rides compliments of CUPE 23 and Burnaby Parks, Recreation and Culture Commission.

(top) Burnaby Art Gallery's BAG on a Bike printmaking workshop, BC Day Celebration.  
(bottom) Nylon Zoo entertainment at World Rivers Day.

Beautiful place, great to learn about the history of Burnaby.

Abbie from Ireland, May 21, 2019



Interactive and educational.

Eliyo from Israel, July 24, 2019

We loved the museum and culture buildings, and the enthusiasm of all the volunteers, it was great!

Tracey from London, UK, August 29, 2019

Sam Seward, Indigenous Learning Week



# Volunteers



Village Volunteers, pickling demonstration at Love Farmhouse.

## Volunteers

Azmina Abdulla  
 Jean Beaton  
 Olivia Beland  
 Ty Berry  
 Barbara Bowes  
 Lina Chan  
 Rose Chen  
 Kimberly Cheng  
 Matthew Chiang  
 Linda Collins  
 Russell Collins  
 Shannon Curley  
 Roni De Guzman  
 Emilie Do Paco  
 Brian Elder  
 Candace Espeseth  
 Lorri Espeseth  
 Wendy Fang  
 Iona Ferguson  
 Teresa Findlay  
 Sage Fleming  
 Amy Flores  
 Irene Fung  
 Linda Giesbrecht  
 Bitu Ghorbani  
 Jonathan Graves  
 Rick Greenwell  
 Gwen Guguin  
 Lala Hajdu  
 Paul Harris  
 Mary Harrison

Maureen Hatzinikolaou  
 Cecily Hildred  
 Sophie Hissen  
 Walter Homewood  
 Julia Hsu  
 April Huang  
 Frank Huang  
 Oliver Huang  
 Frank Hucul  
 Sandra Hume  
 Shirley Hume  
 Lorraine Irving  
 Alekhya Josyula Venkata  
 Elena Kalsi  
 Vivek Kalsi  
 Doreen Kennedy  
 Robin Langmuir  
 Janet Lee  
 Jessica Leung  
 Larry Levchuk  
 Maja Lezo-McFarlane  
 Debbie Liang  
 Erika Lieu  
 Helen Lightfoot  
 Yooyoun Lim  
 Sophia Lou  
 Linda Lowe  
 Kristy Mallan  
 Indrani Manogaran  
 Andrew Mattie  
 Gil Mattila  
 Holly McManus

## Volunteers

Bill Mellors  
 Alicia Moroz  
 Anikah Nawar  
 Annabel Ng  
 Ida Niksirat  
 Alexander Nolan  
 Sara Norman  
 Thy Nguyen  
 Alessandra Olynyk  
 Lynda Maeve Orr  
 Robin Orr  
 Helen O'Shea  
 Jiali Pan  
 Lisa Peradenic  
 Nathan Peradenic  
 Anthony Pereira  
 Carol Pettigrew  
 Lucia Pimentel  
 Rosaria Pimentel  
 Bob Proctor  
 Ellen Proctor  
 Ben Quan  
 Riya Rampuri  
 Monica Rosales  
 Anna Schillaci  
 Norman Schmahl  
 Charles Seager  
 Natalia Sharma  
 Ewan Sheard  
 Jemma Sin  
 Jammy Smith  
 Renee Smitherman

## Volunteers

Janette Steel  
 Kristie Stewart  
 Teresa Switzer  
 Pia Tagaca  
 Gail Takeshita  
 Deb Thomas  
 Henry Tian  
 Kathy Tietjen  
 Shelly-Ann Van Hoof  
 Nedie Vanderelst  
 Christine Velez  
 Gaurav Wadehra  
 Gian Ward  
 Lilah Williamson  
 Jim Wong  
 Lucy Xu  
 Charis Yau  
 Mary Yau  
 Victor Yin  
 Jem Zheng

## Emeritus Volunteers

Kehar Singh Aujla  
 Natalie Battista  
 Ella Beatty  
 Kay Bell  
 Pat Cameron  
 Bianca DeCosse  
 Bob Farrow  
 George Hollinger  
 Gwen Horne  
 Ruby Johnson  
 LesLee Lowe  
 Shirley Nilsen  
 Barbara Stewart  
 Hazel Vandaele

# Community Groups & Partners

## Community Groups

Academie Duello  
 Arrow Squadron 637  
 BC Geneological Society  
 BC Hydro Community Outreach  
 BC Wildlife Federation  
 Buckingham Elem. School  
 Burnaby Art Gallery  
 Burnaby Arst Council  
 Burnaby Beekeepers Association  
 Burnaby Central High School  
 Burnaby Civic Employees Union CUPE 23  
 Burnaby Christmas Bureau  
 Burnaby Eco Sculptures Program  
 Burnaby Engineering Department  
 Burnaby Environmental Services  
 Burnaby Food First  
 Burnaby Lake Girl Guides Canada  
 Burnaby Lake Park Association  
 Burnaby Mountain High School  
 Burnaby North High School  
 Burnaby Planning Department  
 Burnaby Public Library  
 Burnaby School District  
 Burnaby South High School  
 Burnaby Water Dispensing Trailer  
 Byrne Creek Streamkeepers  
 Chinese Taoism Kuan-Kung Association Tian-Jin Temple  
 Classic Motorcycle Club of BC  
 Coast Salish Arts & Cultural Society  
 Confederation Park Choir  
 Deer Lake United Church  
 EageL Creek Streamkeepers  
 Edmonds Community School  
 Forte Theatre Society  
 Greater Vancouver Motorsport Pioneers Society  
 Kwantlen First Nation  
 Lower Mainland Green Team (Green Team Canada)  
 Moscrop High School  
 xʷməθkʷəy̓əm First Nation  
 Old Interurban Forest Peservation Society  
 O.W.L.  
 Pacific Spirit Quilters Guild  
 RCMP Burnaby detachment  
 SFU Science Alive  
 Squamish First Nation  
 St. Francis de Sales  
 St. Francis of Assis School  
 St. John Ambulance - Tri Cities Branch  
 Stanley Park Ecological Society  
 Stoney Creek Environment Committee

TraiNgang  
 Tsleil-Waututh First Nation  
 Volunteer Burnaby  
 Wildlife Rescue

## Sponsorships

Concord Pacific  
 Burnaby Civic Employees Union CUPE 23  
 Parks, Recreation & Culture Commission

## Grants

Vancity Community Partnerships Grant  
 Department of Canadian Heritage  
 Real Estate Foundation of BC  
 World Rivers Day Organization



Burnaby Village Museum Canada Day Volunteer



# Staff



Burnaby Village Museum Staff and Volunteers



## Regular Staff

Deborah Tuytens, Cultural Heritage Manager  
 Lisa Codd, Curator  
 Jane Lemke, Curator  
 Jane Lemke, Assistant Curator  
 Kate Petrusa, Assistant Curator  
 Elisabeth Czerwinski, Conservator  
 Catharine McPherson, Museum Registrar  
 Nancy Stagg, Marketing & Sponsorship Coordinator  
 Sanya Pleshakov, Museum Programs Coordinator  
 Lorenda Calvert, Assistant Museum Programmer  
 Lisa Langlet, Assistant Museum Programmer  
 Dianne McLeod, Assistant Museum Programmer

Orlanda Batista, Office Supervisor  
 Cyndy Patenaude, Booking Clerk  
 Bradley Smith, School Bookings Clerk  
 Jonathan Lupien, School Bookings Clerk  
 Mi Na Kim, Reception  
 Crystal Ueno, Reception  
 Jass Atwal, Maintenance Supervisor  
 Ettore Abbruzzese, Museum Janitor  
 Ted Barber, Museum Janitor  
 Rongerard Gaanan, Museum Janitor  
 Dan Morrison, Museum Janitor  
 Keith Thompson, Gardener

## Auxiliary Staff\*

\* Many staff work in multiple areas. The area where the majority of hours are accrued is where they are listed.

### Design Supervisor

Lillian Tom  
 Amy Willson

### Preparator

Carly Bouwman  
 Barb Choit  
 Heinie Enslin  
 Jenny Escobell  
 Elaine Garrett  
 Doug Hitchen  
 Jennie Koh  
 Margaret Kolpin  
 Albert Woods

### Display Technician

Alison Brown  
 Heather MacKay

### Registrar

Will Archibald  
 Denise Fong  
 Sharon Fortney  
 Rebeca Salas

### Curatorial Aide

Maya Gray

### Conservation Aide

Tania Ainsworth  
 Hugh Walker

### Gift Shop Assistant

Camelia Andrei

### Carousel Operators

Amir Ali  
 Matthew Ball  
 Max Chang  
 Michael DesMazes  
 Ana Erickson  
 Sewa Gill  
 Kevin Grahovac  
 Nathan Howes  
 George Karpel  
 Andrew Leow  
 Kirti Mysuria  
 Jessica Nelson  
 Rebecca Peckham  
 Edward Phan  
 Gillian Schoenefuhs  
 Julia Sharma

### Interpreter Lead

Eric Damer  
 Michelle Harrison  
 Andrew Hildred  
 Ann-Marie Kehoe  
 Jennifer Moysa  
 Maria Peradenic  
 Diana Pirritano  
 Kate Procopio

### Contract Instructors

Candace Curr  
 Meagan Innes  
 T'uy't'ananat-Cease Wyss  
 Senaqwila Wyss

### Janitor

Mickael Filain  
 Chris Amond  
 Nicomedes Biteng  
 Sean Jamieson

### Maintenance Grounds

Michael Des Mazes  
 Kevin Ortner  
 Sean Murphy

### Museum Interpreters

Brendan Boylan  
 Jenevieve Chenatte  
 Annalee Chow-Wone  
 Penny Chubaty  
 Alex Code  
 Wendy Morrow Donaldson  
 Ryan Fletcher  
 Lorne Gray  
 Sing Hay Ho  
 Mica Jensen  
 Kelsey Johnson  
 Stephanie Johnson  
 Kwang Kang  
 Wilf Lim  
 Faythe Lou  
 Shannon Macelli  
 Shirley McGrew  
 Alodia Mulingtapang  
 Audra Picco  
 Brian Ross  
 Ross Saare  
 Marilyn Sheehan  
 Amanda Sittrop  
 Lenard Stanga  
 Emily Stepto  
 Sabrina Tonolli  
 Brian Williams  
 Elwin Xie

### Recreation Leader 1

Claire Culley  
 Angela Essak  
 Maggie Fong  
 Aliya Jiwa  
 Vera Kharitonova  
 Meredith Miller  
 Kyle Rampuri  
 Nurani Virani  
 Keshav Wadehra

### Recreation Clerk 1

Patricia Ajiko  
 Pabin Bopanrai  
 Yvonne Brabander  
 Jenny Escobell  
 Edna Iorio  
 Andra Jurzyniec  
 Jennifer Kang  
 Anna Kwan  
 Omeed Lakhani  
 Jeremy Leong  
 Suzana Lew  
 Alyssa Leyba  
 Jonathan Lupien  
 Karen Nguyen  
 Christine Paterson  
 Jenna Ratcliffe  
 Braden Shewchuk  
 Carlene Stott  
 Adrienne Tung  
 Shally U  
 Crystal Ueno  
 Jamane Wong





### Matriarch's Garden

This garden is filled with plants local to Burnaby that have always been important to Sḱwagwúʼ mesh and traditional ha-ná-míshah speaking people. The stones are shaped in the form of a Coast Salish eye. This garden is to honour the matriarchs.